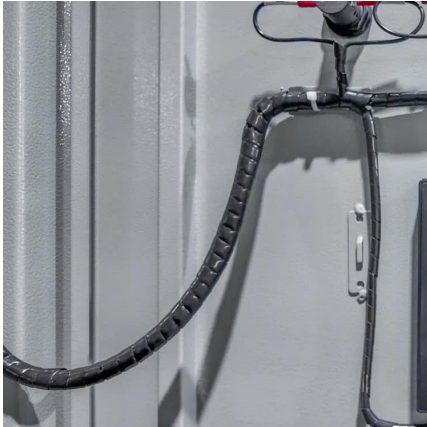


1 monocrystalline photovoltaic panel length and width





1 monocrystalline photovoltaic panel length and width



Solar Panel

Monocrystalline Solar Panels are manufactured in 60, 72, and 96 cell configurations with a solar efficiency between 15-25%. Monocrystalline Solar Panels have ...

[Standard Solar Panel Sizes And Wattages \(100W ...](#)

Alright, let's have a look at the length and width of typical solar panels, with wattage (very important), and complete with area or square footage (useful ...



What Is The Highest Wattage Solar Panel Available?

Solar panels have become increasingly efficient and powerful, with some panels now capable of producing extremely high wattage. Understanding the factors that influence ...

Cost of Monocrystalline Solar Panels: An In-Depth ...

Monocrystalline Solar Panels Explained The cost of monocrystalline solar panels varies depending



on the size and brand. On ...



Monocrystalline silicon photovoltaic panel specifications and ...

Choosing Between Monocrystalline and Polycrystalline Solar Panels. When investing in solar energy, a common question homeowners and businesses face is whether to choose



Monocrystalline photovoltaic panels: what they are and their

Monocrystalline photovoltaic panels are advanced devices designed to convert sunlight into electrical energy through a process called the photovoltaic effect. Their ...



1 kW Solar Panel (Ultimate Guide To A 1 kW Solar ...

The total size of this 1 kW solar panel array would be 5,3M2. Remember that you'll need less space with more powerful solar panels to ...





Standard Solar Panel Sizes And Wattages (100W-500W ...

Alright, let's have a look at the length and width of typical solar panels, with wattage (very important), and complete with area or square footage (useful when calculating how many solar ...



Solar Photovoltaic Panel Sizes [Full List And Other ...

A monocrystalline residential solar panel typically comes in two sizes: 60-cell and 72-cell. The 60-cell panels are about 65 by 39 inches and have a power ...

[Solar Panel Size Chart: Variations and Dimensions](#)

Home panels are 61 inches by 41 inches. A little shorter and slightly wider. Depth and weight matter here as a usual quantification of solar panels as well. Usually, 1.4 to 1.8 ...



[Complete Guide for Solar Panel Size . GRANKIA ...](#)

Choosing the right solar panel size requires evaluating energy needs, space, efficiency, sunlight, system setup, budget, and future growth.



Solar Photovoltaic Panel Sizes [Full List And Other FAQs]

A monocrystalline residential solar panel typically comes in two sizes: 60-cell and 72-cell. The 60-cell panels are about 65 by 39 inches and have a power output of around 280-320 watts, and ...

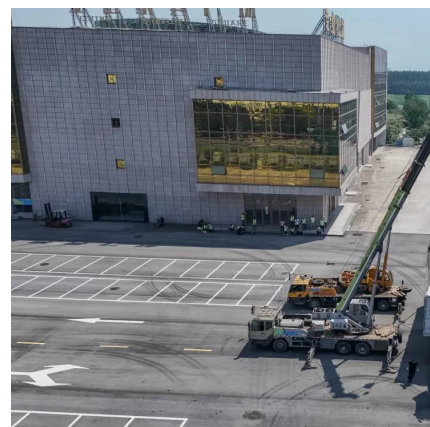


Solar Panel Size and Wattage Chart: Standard Sizes & Uses for ...

Using a solar panel size chart can help you choose the best types of solar panels for your home or application. Because the size of a standard solar panel can vary, a chart that ...

Jinko 555 Watt Mono Solar Panel

Jinko 555 Watt Mono Solar Panel for sale. Get good pricing for the Jinko 555 Watt Mono Solar Panels available at Linbro Park JHB warehouse





How Big Is the Average Solar Panel? Dimensions

Image source: solarchoice The average solar panel is typically about 5.5 feet in length and 3.3 feet in width. This gives the panel an ...

550W Monocrystalline Solar Panel. WCCSOLAR

The 550W Solar Panel is one of the most powerful in the 24V range for use in 12, 24 and 48 volt solar installations.



Solar Panel Sizes, Dimensions & Weight , Solar Choice

Standard residential solar panels contain 60 solar cells (or 120 half-cut solar cells) and typically generate anywhere from 350W to 500W of electricity. The size of these panels ...

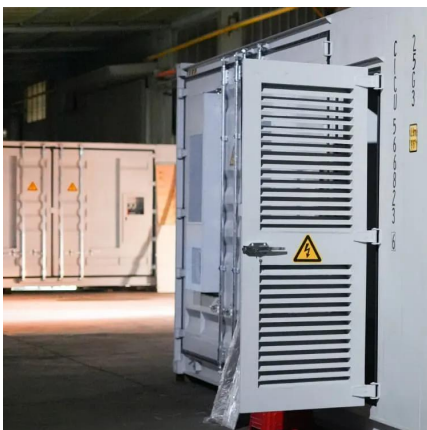
550w photovoltaic panel size specifications

The Axitec 550 watt AXIbipremium XXL bifacial monocrystalline solar panel made in the USA model AC-550MBT/144-US is the best in terms of power output and long-term ...



[Solar Panel Sizes and Wattage: A Comprehensive ...](#)

Explore our comprehensive guide on solar panel sizes and wattage to make informed decisions. Learn to choose the right solar power ...



Solar Panel Size and Wattage Chart: Standard Sizes & Uses for ...

Solar Panel Size and Wattage Monocrystalline, Polycrystalline, and Thin-film are the three main types of solar panels used on the market today. They are all produced to exacting ...



What is Monocrystalline Solar Panel: A Consolidated ...

Mostly residential mono-panels produce between 250W and 400W. A 60-cell mono-panel produces 310W-350W on average. Due to their ...





Solar Panel -

No serious breakage, crack, bubble, foreign body, dislocation of battery, noobvious color difference and white streak. Edge breakage of battery sheet: the acceptance length is 5mm ...

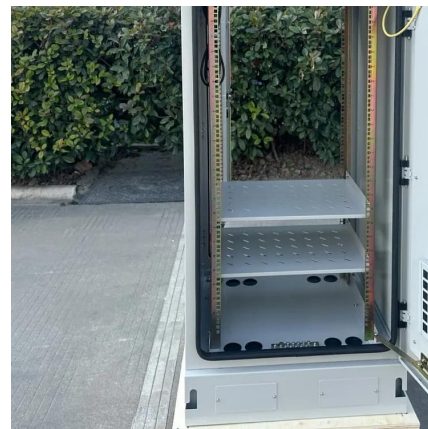


[Solar Panel Dimensions Sizes and Wattage](#)

In terms of dimensions, a 300w monocrystalline or polycrystalline solar panel typically has a length of around 1.6 meters and a width of 1 meter. However, these dimensions ...

Solar Panel Sizes, Dimensions & Weight , Solar Choice

Standard residential solar panels contain 60 solar cells (or 120 half-cut solar cells) and typically generate anywhere from 350W to 500W of ...



Different Types Of Solar Panels In India: Cost, Efficiency & Power

Explore 10 different types of solar panels in India, ranging from first-generation monocrystalline panels to the advanced types of solar panels for houses, including bifacial ...



What is Monocrystalline Solar Panel: A Consolidated Guide

Mostly residential mono-panels produce between 250W and 400W. A 60-cell mono-panel produces 310W-350W on average. Due to their single-crystal construction, ...



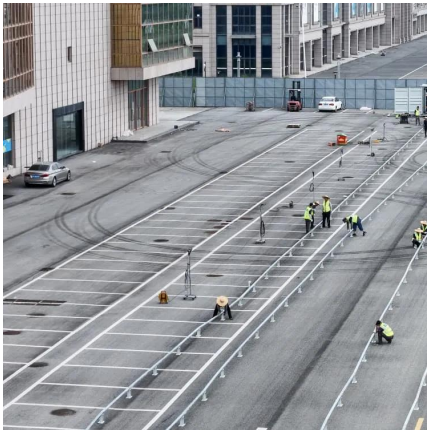
[Solar Panel Dimensions Sizes and Wattage](#)

In terms of dimensions, a 300w monocrystalline or polycrystalline solar panel typically has a length of around 1.6 meters and a width of 1 meter. ...

[Solar Panel Size Chart - SizeChartly](#)

Monocrystalline panels are known for their high efficiency and compact size, often measuring about 65 x 39 inches. These panels are ideal for limited spaces and maximize energy ...





Solar Panel Dimensions and Sizes

The average residential solar panel is around 1.7 metres by 1 metre (1700mm x 1000mm). Here's a bit more about standard solar panel dimensions.

Contact Us

For catalog requests, pricing, or partnerships, please visit:
<https://www.talbert.co.za>